

2013

Sodwana Secret Lake Proposal



Werner Slabbert
DIY Timber Homes
28/10/2013



Contents

Company Profile	2
Services that we provide to our clients	2
Directors Industry Involvement	2
Pricing	3
Log Cabins – Pricing in ZAR	3
SPECIFICATIONS:.....	4
EXCLUDED FROM THIS QUOTATION:	5
NOTES:.....	5
Timber Home Pictures	6
1 Bedroom – Andes Cottage	7
2 Bedroom – Magaliesberg Cabin	8
2 Bedroom – Kilimanjaro Cabin.....	9
3 Bedroom – Cederberg Cabin	10



Company Profile

Eco Friendly Construction is our passion and we specialize in the following:

- Turn Key Developments
- Hotels, B&B's, Game Lodges
- Residential and Holiday Homes
- National & International Operations
- Timber Frame Structures, Solid Log Structures
- Our finishes consists of the following: Heavy Solid Log, Half log Cladding, Cabin Board, Vermont Plank, Full Fiber Cement Sheet Cladding

Services that we provide to our clients

- Architectural designed plans
- Infrastructure Development
- Turn Key Projects
- Project Management

Directors Industry Involvement

- ITFB Chairman -Gauteng Region
- VICE President – ITFB Nationally
- ITC (Institute of Timber Construction) – Director
- SANS 10-082 – Regulation Committee Chairman
- Lecturing at various top Universities around South Africa on Timber Buildings



Pricing

Log Cabins - Pricing in ZAR

Plans	Andes Cottage	Magaliesberg Cabin	Kilimanjaro Cabin	Cederberg Chalet
Dimensions				
House m ²	30	53	59	74
Deck and Roof m ²	14	26	29	29
Total m ²	44	79	88	103
Bedrooms	1	2	2	3
Bathrooms	1	2	2	2
Components				
Floor, Walls, Windows, Doors, Roof, Ceilings, Insulation, Internal Cladding (T&G Fibre Cement)	103 744.80	200 500.20	207 265.20	261 791.80
Upgrades				
Transport	20 000.00	25 000.00	25 000.00	25 000.00
Vinyl Flooring	6 000.00	10 600.00	11 800.00	14 800.00
Installation Labour cost on site	15 000.00	26 500.00	29 500.00	37 000.00
Optional Timber Deck, Balustrade and Roof	23 040.00	41 472.00	46 080.00	46 080.00
Septic tank, including installation	6 000.00	6 000.00	6 000.00	6 000.00
2 Plate Gas Stove (Excludes Gas Installation - to be arranged with Developer)	600.00	600.00	600.00	600.00
Electrical Installation (Light Points, Plugs, D/B) Transport included)	4 000.00	6 000.00	7 000.00	7 000.00
Solar Panels, Batteries and Installation	10 000.00	12 000.00	12 000.00	12 000.00
Geza Bathroom (includes shower, toilet and basin per bathroom) installation Transport included	13 259.00	21 610.00	21 610.00	27 718.00
Kitchen, including installation	13 590.00	13 590.00	13 590.00	13 590.00
Sub Total	111 489.00	163 372.00	173 180.00	189 788.00
Total Ex VAT	215 233.80	363 872.20	380 445.20	451 579.80



SPECIFICATIONS:

Floor	
	500mm off ground level
Product	Description
Gum poles	H4 treated gum poles 100mm-125mm (variable radius)
Bearers	H3 treated 38mm by 152mm S5 SA Pine
Joists	H3 treated 38mm by 114mm S5 SA Pine
Floor boards	19mm shutter ply
Punch Pad Foundations	Concrete Ready Mix
Stairs (3 steps, no handrails)	H3 treated 50mm by 228mm Steps *Optional upgrade to a timber Ramp
*Optional Flooring	Vinyl
Decking	22mm H3 treated pine decking
Walls	
Product	Description
Frame	H3 treated 38mm by 76mm S5 SA Pine
Insulation and Waterproofing	Sisalation
External cladding	22mm T&G Log Profile or 9mm Fibre Cement – H3 Treated
Internal and External paint	Oil treatment for outside logs, no internal paint included
Internal cladding	6mm Fibre Cement Wood grain pattern
Windows & doors	Aluminium Doors and Windows
Wall Insulation	Cavity Batts
Roof	*(Can be replaced with a mono pitch SIPS panel Chromadek roof)
Product	Description
Trusses	SA pine S5
Covering	Traffic Green 5mm Chromadek corrugated iron sheeting
Ceiling	Fibre cement board (H-Strip Joined)
Roof Insulation	Aerolite 100mm
Fasteners	
Nails, screws, nuts and bolts are all included	



EXCLUDED FROM THIS QUOTATION:

- Any & all blasting as well as any use / hiring of pneumatic - machinery for the excavation of foundations, septic tanks, French drains & trenches.
- Electrical and H2O reticulation outside the house.
- Gutters.
- Aluminium Fly Screens for all doors and windows.
- Generator hire.

Any extras & additional costs are for the clients account & to be paid in advance, as well as, additional cost as a result of these “extras”.

NOTES:

- All materials and building methods are in accordance with S.A.B.S standards.
- With acceptance of this quotation, a 50% payment will be required on order for the material and the full and final 50% payment before dispatch of the material.
- The payment of installation cost: 30% 2 days before commencement of installation, 40% when at roof height, and 30% on completion.
- All materials used for construction remains the property of DIY timber homes until full & final payments are received.
- Delivery to site has been included based on an order of 4 units
- Visas, Medical Expenses, Import Taxes, Accommodation, Food and Hardship allowances are ***not*** included.
- Building site to be accessible to Super link truck (for more than one unit) or 8 Ton truck for one unit
- Requirements : Client to supply electrical point or generator and running water fit for human consumption on site

This is the full & final quotation, replacing any & all previous quotations or prices, including prices & specifications as per price list.

If this quotation is acceptable a contract will be sent through for your approval and signature. This quotation is valid for 30 days.

DIY LOG HOMES (Pty) Ltd: 2011/132927/07 t/a DIY Timber Homes
228 Montrose Ave, cnr Northumberland and Montrose, Northriding, Johannesburg



Timber Home Pictures



DIY LOG HOMES (Pty) Ltd: 2011/132927/07 t/a DIY Timber Homes
228 Montrose Ave, cnr Northumberland and Montrose, Northriding, Johannesburg



1 Bedroom – Andes Cottage

GENERAL

Area = 29.712m²

Windows
3 @ 562x1500
2 @ 562x900

1 x External Door
2 x Internal Door



Andes Cottage

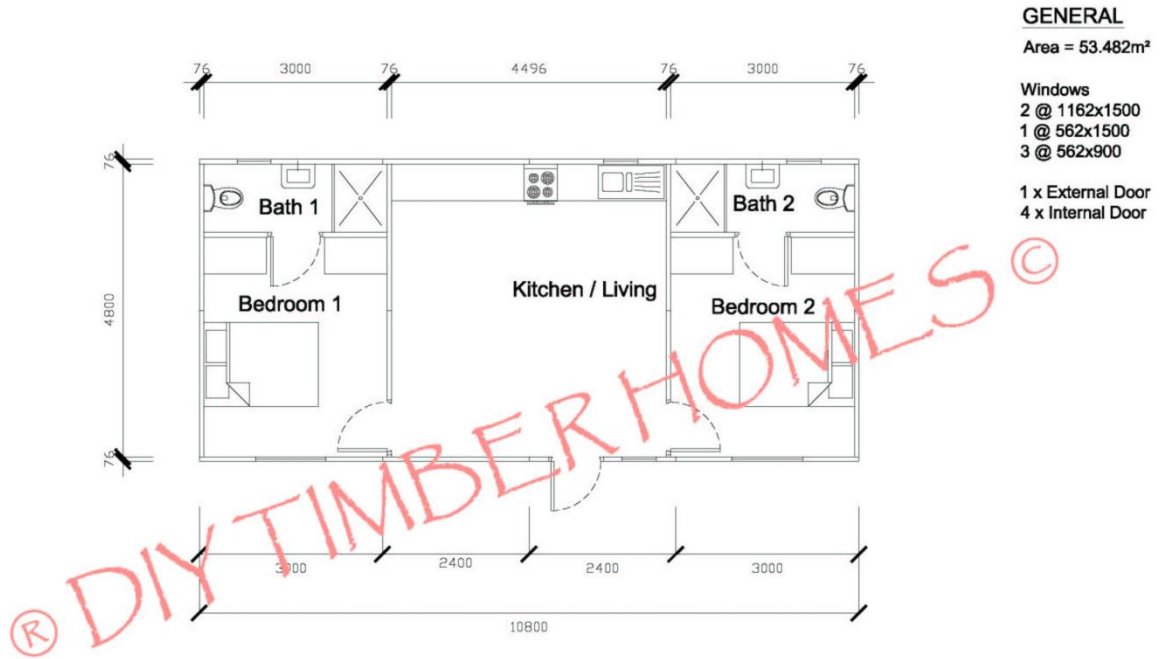
Scale 1:50 (A3)



DIY LOG HOMES (Pty) Ltd: 2011/132927/07 t/a DIY Timber Homes
228 Montrose Ave, cnr Northumberland and Montrose, Northriding, Johannesburg



2 Bedroom – Magaliesberg Cabin



Magaliesberg Cabin

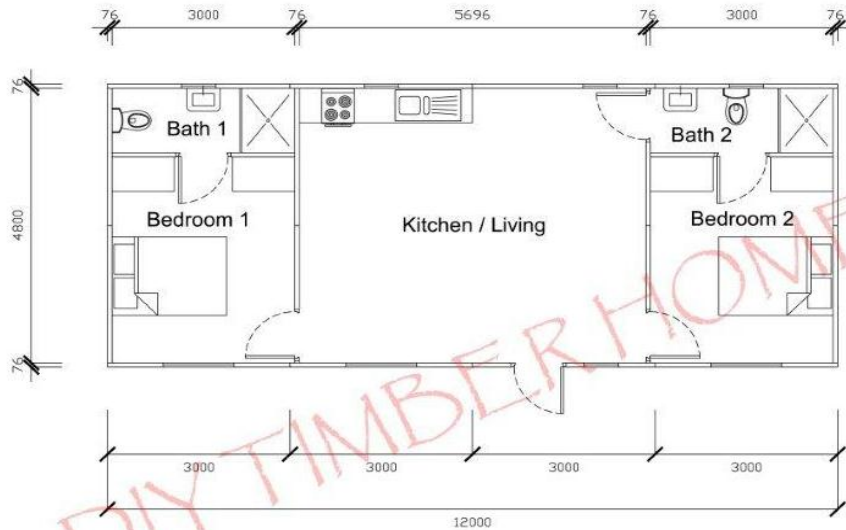
Scale 1:50 (A3)



DIY LOG HOMES (Pty) Ltd: 2011/132927/07 t/a DIY Timber Homes
228 Montrose Ave, cnr Northumberland and Montrose, Northriding, Johannesburg



2 Bedroom – Kilimanjaro Cabin



GENERAL

Area = 59.424m²

Windows

3 @ 1162x1500
1 @ 562x1500
4 @ 562x900

1 x External Door
5 x Internal Door

Kilimanjaro Cabin

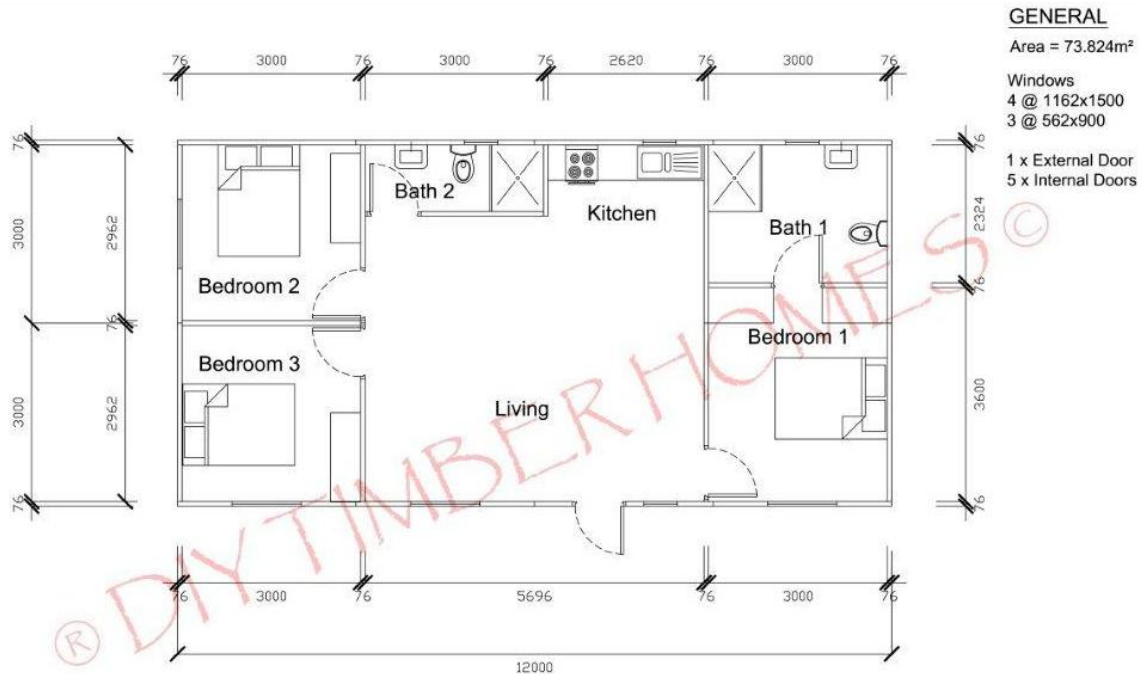
Scale 1:50 (A3)



DIY LOG HOMES (Pty) Ltd: 2011/132927/07 t/a DIY Timber Homes
228 Montrose Ave, cnr Northumberland and Montrose, Northriding, Johannesburg



3 Bedroom – Cederberg Cabin



Cederberg Chalet

Scale 1:50 (A3)



DIY LOG HOMES (Pty) Ltd: 2011/132927/07 t/a DIY Timber Homes
228 Montrose Ave, cnr Northumberland and Montrose, Northriding, Johannesburg

What is your Style

COLOUR SAMPLES FOR FORMICA counter TOPS



Black-Slate



Isis-Kokino



Moss-Granita

COLOUR SAMPLES FOR EXTERIOR FINISHES - KITCHEN UNITS



American-Walnut



Coimbra



Enya-Walnut



Harvard Cherry

HANDLES



Aluminium Barrel Handle - Brushed Satin Nickel - 128 mm



Arch Handle - Satin Chrome - 128mm



DIY LOG HOMES (Pty) Ltd: 2011/132927/07 t/a DIY Timber Homes
228 Montrose Ave, cnr Northumberland and Montrose, Northriding, Johannesburg